



# About making Alpha Design Group a subsidiary

MIMAKI ENGINEERING CO., LTD

September 13<sup>th</sup>, 2018

---

# **ABOUT ALPHA DESIGN GROUP**

# Corporate Profile

(As of June 30, 2018)



Company name ALPHA DESIGN CO.,LTD.

Headquarters 2211-3 Ko, Shigeno, Tomi-city, Nagano, Japan

Representatives President & CEO : Shujiro Morizawa

Business contents Development, manufacture and sale of factory automation equipment, development, manufacture and sale of board mounting equipment, metal processing business etc.

Capital 195 million yen

Funded January 19, 1989

Fiscal year June 30

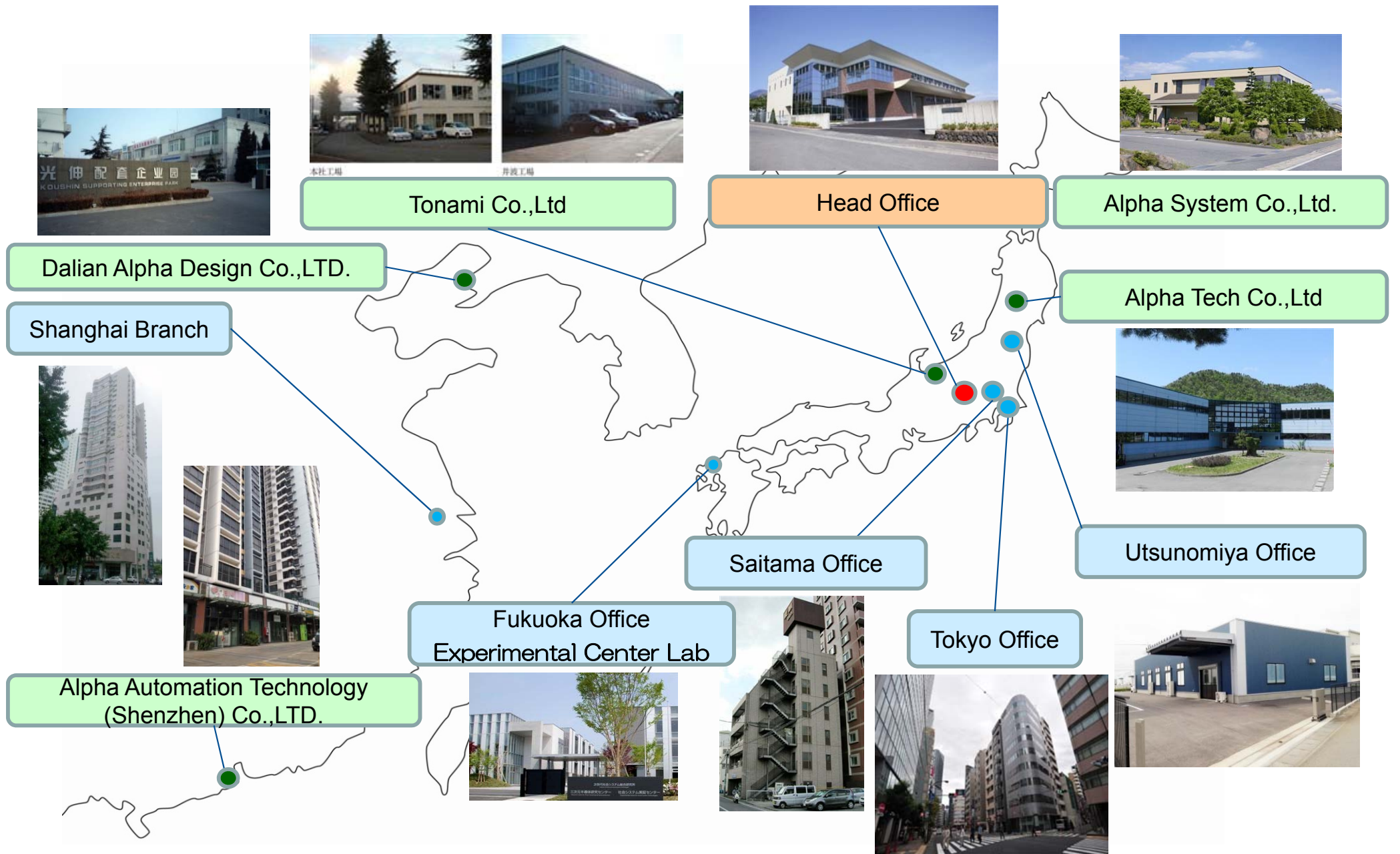
Employees Consolidated 285, Non-consolidated 88

Branch office Tokyo, Saitama, Fukuoka, Utsunomiya

Group Companies  
(3 companies in Japan, 2 companies in China)

Alpha System Co.,Ltd.  
Alpha Tech Co.,Ltd  
Tonami Co.,Ltd  
Dalian Alpha Design Co.,LTD.  
Alpha Automation Technology (Shenzhen) Co.,LTD. (including Shanghai Branch)

# Base



# History

Year	History
1989	Establishment of ALPHA DESIGN CO., LTD. Initial Capital : 15 million yen
1992	Land acquisition and construction of Head Office and Plant No.1 Increase in capital to 48 million yen
1995	Construction of a Plant No.2
2005	Establishment of Shanghai Office Increase in capital to 95 million yen
2006	Land acquisition and construction of a Plant No.3 Establishment of Tokyo Office (R&D, Sales) and Osaka Office (R&D, Sales)
2007	Increase in capital to 195 million yen
2008	Succeed the Board-Packer business from Citizen Co., Ltd. Open a Fukuoka Office
2009	Succeed the Tonami Co., Ltd. (large-sized product processing business) and began in operations
2010	Established ALPHA TECH in Yonezawa city Yamagata. Processing Dept. was separated from Alpha Design and began in operations as Tonami Corporation Ltd., Nagano Office.
2011	Establishment of Dalian Alpha Design Co., LTD. Move Fukuoka branch office into Experimental Center for Social System Technologies
2013	Establish sales and design division in TS Nagano and start orders for OEM products (Mimaki Engineering : Industrial Printer Development · OEM) Open a Mihari Factory and Kurakake Factory
2014	Establishment of Utsunomiya Office. Flying prober's business succession from Miyachi Systems (formerly).
2015	Establishment of Alpha Automation Technoogy (Shenzhen) Co.,LTD. Shanghai Branch. TS Nagano → Separate company established as Alpha System Co., Ltd.

# Overview

## Alpha Design Group

Net sales 4,610million yen, Operating profit 170 million yen

( Fiscal year ended June 2018/Simplified consolidated )

FA equipment  
business  
1.4 billion yen

Board Mounting  
Equipment Business  
900 million yen

Semiconductor  
manufacturing  
equipment business  
600 million yen

Board inspection  
equipment business  
200 million yen

Metal processing  
business  
1.5 billion yen

Vector technology, Mechatronics technology

Large sheet metal,  
press, metal  
processing  
technology

Alpha Design Inc. (AD)

Alpha System Co.,Ltd.  
(AS)

Alpha Tech Co.,Ltd  
(AT)

Local subsidiary in China  
(Dalian · Shenzhen · Shanghai)

Tonami Co.,Ltd



# Business contents

## 1. FA equipment business (Custom equipment)



# Business contents

## 2. Board Mounting Equipment Business (Heterogeneous component insertion device)

Heterogeneous part insertion machine  
Performance No.1



AMR-II

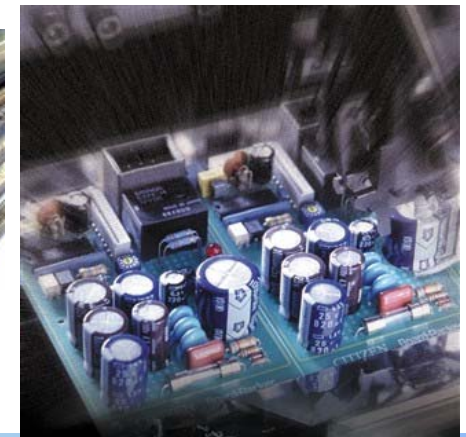


AMX



AMI

- Axial, Radial composite insertion machine AMR
- Heterogeneous part insertion machine AMX
- Press-fit connector insertion equipment (APF)
- Heterogeneous part manual insertion machine AMM





# Business contents

## 2. Board Mounting Equipment Business (Moisture-proof agent, coating device)

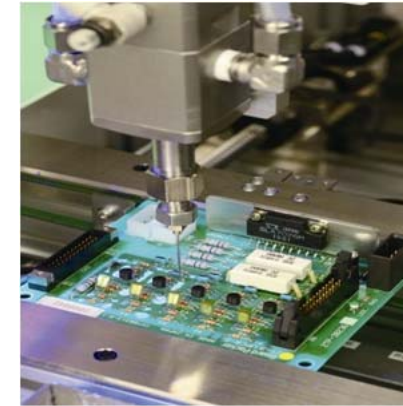
Easy area setting and high quality coating



ACM-200



ACM-200L



1gun



2guns

•Conformal coating equipment for printed circuit substrate(ACM)

# Business contents

## 3. FP device ( Board inspection equipment business)

High speed / high accuracy flying prober (Utsunomiya office)



Model 3600



Model 3800



Model 5800

# Business contents

## 4. Metal Processing ( Sheet Metal, Welding, Press, Processing, Assembly )

Sheet Metal, Welding, Press,  
Processing, Assembly



Sheet Metal  
Processing Facility  
Head Office Factory



Laser automatic cutting machine



3D laser automatic cutting machine



Vendor



1000 t press



Turret punch

Machine  
Processing Facility  
Inami Factory



Machining center



5 surface processing machine



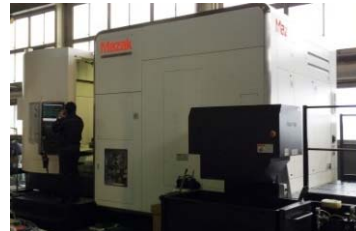
5 surface processing machine



Machining center  
( palette type )



Jib borer



5 axis multifunction machine



NC lathe



Mounting and assembly

---

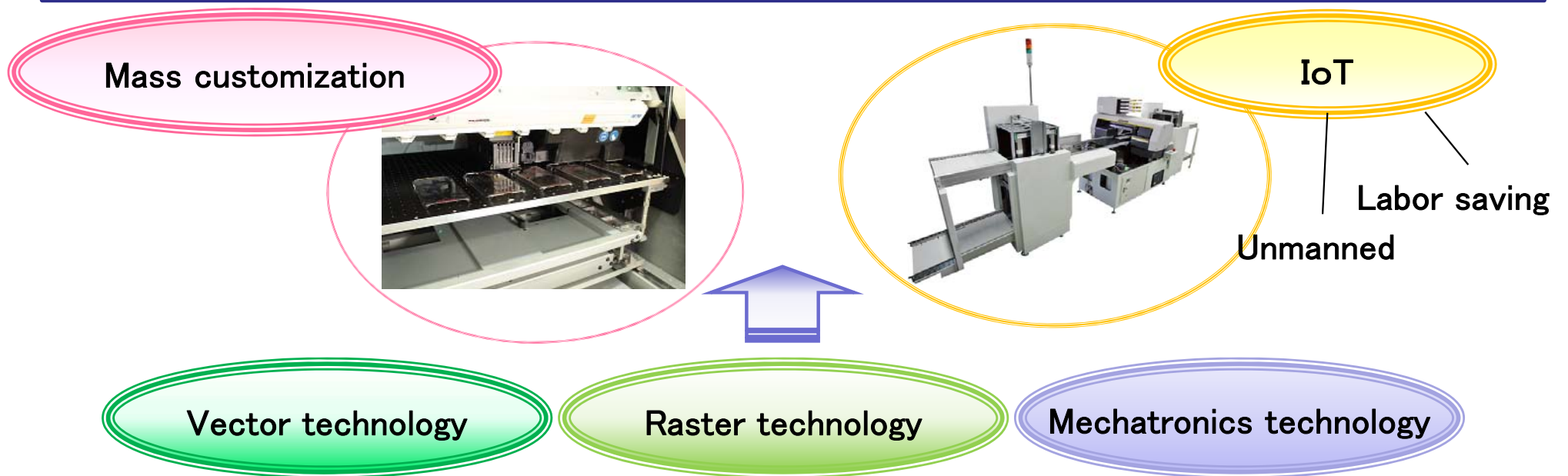
# **ABOUT BUSINESS SYNERGY**



# About business synergy

## ① Technical synergy

- By incorporating vector technology<sup>\*1</sup> and mechatronics technology<sup>\*2</sup> of Alpha design into the technology portfolio, we can respond to “labor saving” and “unmanned” as well as in-house production of various high value added products.



\* 1 Vector is a data format that expresses images as collections of analytic geometric figures such as circles and straight lines. It is utilized in cutting technology and others. Raster is a data format that expresses images with a collection of shades of points and is utilized in inkjet technology and the like.

\* 2 Mechatronics is a compound word of mechanism and electronics and refers to electronic mechanical engineering aiming at the development of high performance and multifunctional products with the results of mechanical engineering fields such as microcomputers added to mechanical engineering products.

# About business synergy

## ② Production synergy

- Mimaki Precision and the function of metal processing business of Alpha Design Group can be integrated to **improve productivity** through sharing of specialized fields and processing know-how.

## ③ Sales synergy

- **The sales scale can be expanded** by utilizing the Group's sales network for board mounting business, which is the main business of alpha design.

## ④ Management synergy

- **Improve management efficiency** through forest management and profit management by reducing fixed costs through integration of sales bases in Japan and overseas, utilizing efficiency by consolidating factory spaces, introducing our management accounting system.

# MIMAKI ENGINEERING CO., LTD

IR department

E-mail : [mimaki-ir@mimaki.com](mailto:mimaki-ir@mimaki.com)

Web : <https://ir-eng.mimaki.com/>



[ Handling precautions on this document ]

This document was prepared for the understanding of Mimaki Engineering Co., Ltd., and it is not intended to solicit investment. In preparing this material, we are careful to ensure accuracy, but we do not guarantee completeness. We are not responsible for any obstacles or damages caused by the information in this document. The earnings forecasts and forward-looking statements in this material are based on information available at the time of the preparation of this material, and contain potential risks and uncertainties. Therefore, please be aware that actual results may differ greatly from future prospects mentioned or described due to various factors such as changes in the business environment.